

Welcome to Pacific Preschool

Pacific Preschool offers each child the opportunity for maximum social, emotional, physical, and intellectual growth.

The program provides a rich environment wherein children experience success, practice independence and develop confidence and self-esteem.

Children, guided by their teachers, explore reading readiness activities, counting, shapes, colors, spatial awareness, and nature, using concrete manipulative materials.

Music, movement, story-telling, 5-day Read-Aloud, and crafts bring the children together for positive group experiences. The curriculum stimulates each child's curiosity and enthusiasm and sustains a love of learning.



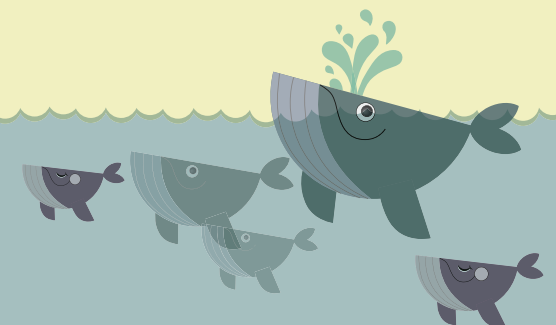
Non-Discrimination Policy

No person shall, on the grounds of race, color, ancestry, national origin, ethnic group identification, religion, marital status, sex, sexual orientation, gender, medical condition, or mental or physical disability or age or on the basis of a person's association with a person or group with one or more of these actual or perceived characteristics be denied from the benefits of any program conducted by Pacific Preschool. Pacific Preschool does not provide religious instruction or allow worship in its child development program. If you feel you've been discriminated against, please call Pacific School at (831) 425-7002. Procedures for complaints are outlined in the Pacific School District Uniform Complaint Procedures. This institution is an equal opportunity employer.



Pacific Preschool

Our goal is to nurture
the child's natural curiosity.



Our Staff

Stacey Reynolds, Teacher
Martha Gagnier, Teacher
Julia Valle, Bilingual Aide

Contact Us

Pacific Preschool
50 Ocean Street, Davenport, CA 95017
Phone: (831) 425-7002
<http://www.pacificesd.org/preschool>

Enrollment Requirements

All children must be 3 years old upon enrollment, be able to use the bathroom independently, and meet the state-mandated vaccination requirements for preschoolers. Children must have all forms and vaccination requirements completed prior to the first day of school.

Tuition

Our preschool offers 5, 4, or 3 days per week at the tuition rates shown below OR 5 days per week with FREE tuition for income-eligible families. Tuition for paying families is spread evenly over nine months, September through May. (Monthly tuition payments are not due in August or June.) Monthly tuition is:

- 5 days per week: \$700*
- 4 days per week: \$600
- 3 days per week: \$480

* We offer a limited number of tuition-free preschool spaces each year. Families interested in our tuition-free spaces should contact the Pacific Elementary at (831) 425-7002. Visit us online at <http://www.pacificesd.org/preschool>.



Daily Schedule

Greeting at the Door 8:30 a.m.

Children are individually greeted at the door and helped to prepare for table, shelf, or floor "jobs". We ask parents to help make the transition from home to school as easy as possible for children by making goodbyes brief. Assure your child that you will return soon.

Morning Circle

At circle time, we gather as a group. The teachers use circle time to introduce new concepts, vocabulary and materials. Children are encouraged to participate fully. Music is a key part of circle time; the children learn many songs and fingerplays. We also enjoy movement activities for body awareness and muscle development.

Work Time

This time is the important core of the preschool day. The children choose activities from the shelves, then work individually or in small groups. The teachers help children find activities and also present early literacy lessons, while demonstrating the use of classroom materials. Children are introduced to work with numbers and letters. The children may choose manipulative materials from any of the following areas: art, mathematics, music, plants, practical life, reading, science, and sensorial development.

Freshly Prepared Breakfast...

Our preschoolers are treated to a freshly prepared breakfast at 9:00 a.m. in their classroom. They are offered 2 entrée choices, fruit, and milk. This nutrition break is meant to supplement, not replace, a nutritious breakfast at home.

... and Lunch

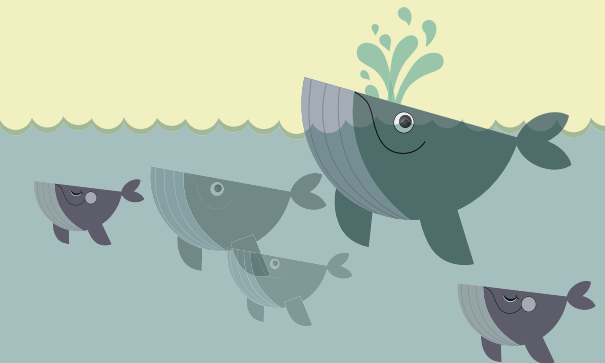
Preschoolers are also prepared and served a full lunch at 10:40 a.m. in the lunchroom, along with the Kindergarteners. This lunch menu consists of a protein, a grain, fruits, vegetables, and milk. All fruits, vegetables, and milk are organic whenever possible.

Outside Play: Little Yard/Big Yard

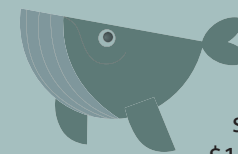
This time is spent playing in the preschool and elementary school playgrounds. There are also organized games and opportunities to use a variety of preschool-specific toys and costumes.

Story and Closing Inside 12:15 p.m.

The teacher will excuse each child from the story-time circle to his/her parent at the end of the preschool day.



After School Care Program



We have an After School Care Program, 12:30 - 2:30 p.m. daily, which has a separate fee structure: \$15 per day (prepaid) or \$18 per day (drop-in), subject to space availability.